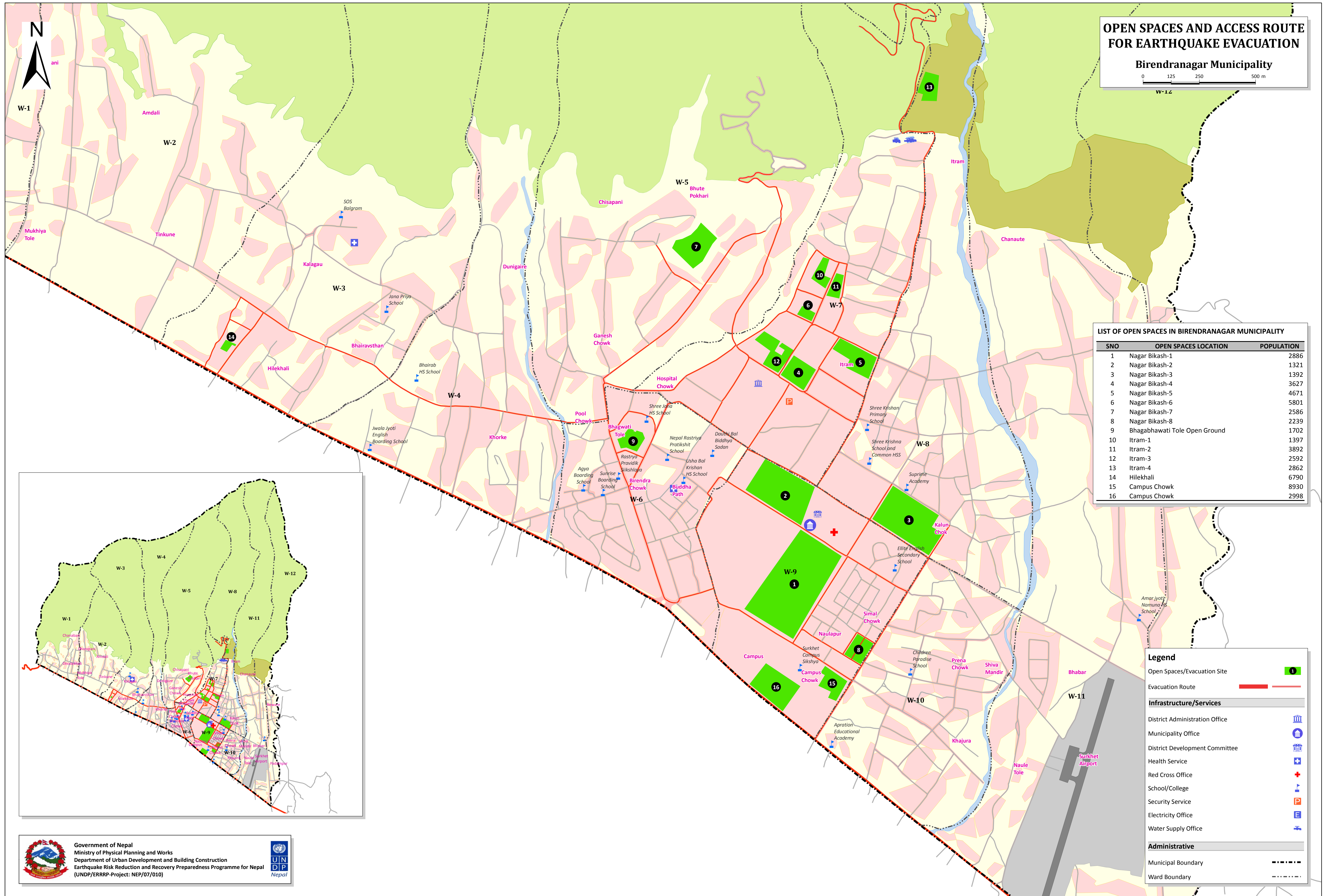
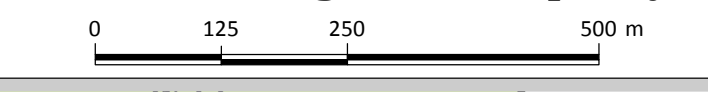


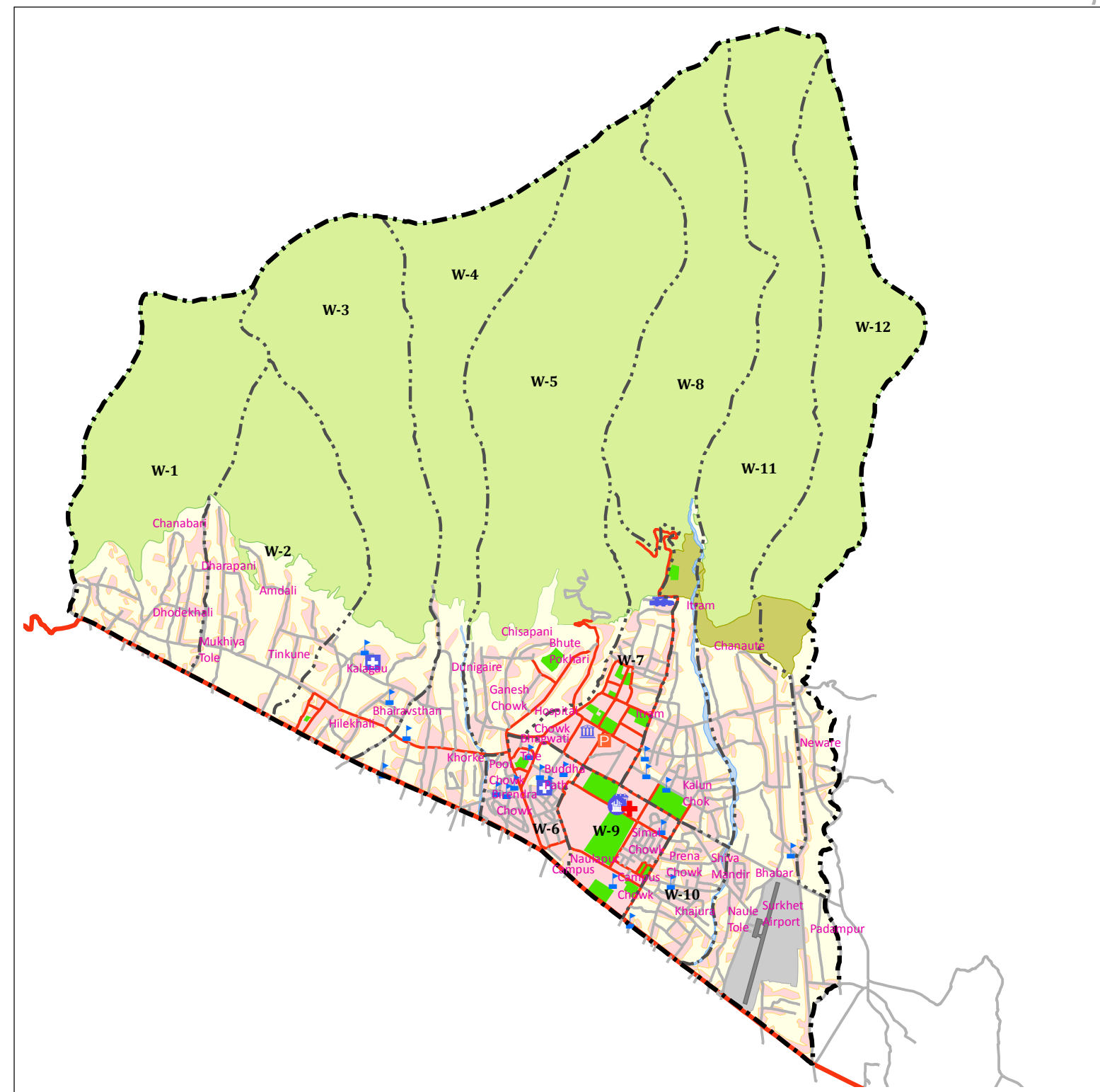
OPEN SPACES AND ACCESS ROUTE FOR EARTHQUAKE EVACUATION

Birendranagar Municipality



LIST OF OPEN SPACES IN BIREDRANAGAR MUNICIPALITY

| SNO | OPEN SPACES LOCATION | POPULATION |
|-----|-------------------------------|------------|
| 1 | Nagar Bikash-1 | 2886 |
| 2 | Nagar Bikash-2 | 1321 |
| 3 | Nagar Bikash-3 | 1392 |
| 4 | Nagar Bikash-4 | 3627 |
| 5 | Nagar Bikash-5 | 4671 |
| 6 | Nagar Bikash-6 | 5801 |
| 7 | Nagar Bikash-7 | 2586 |
| 8 | Nagar Bikash-8 | 2239 |
| 9 | Bhagabhawati Tole Open Ground | 1702 |
| 10 | Itram-1 | 1397 |
| 11 | Itram-2 | 3892 |
| 12 | Itram-3 | 2592 |
| 13 | Itram-4 | 2862 |
| 14 | Hilekhali | 6790 |
| 15 | Campus Chowk | 8930 |
| 16 | Campus Chowk | 2998 |



Legend

- Open Spaces/Evacuation Site
- Evacuation Route
- Infrastructure/Services**
 - District Administration Office
 - Municipality Office
 - District Development Committee
 - Health Service
 - Red Cross Office
 - School/College
 - Security Service
 - Electricity Office
 - Water Supply Office
- Administrative**
 - Municipal Boundary
 - Ward Boundary

Government of Nepal
 Ministry of Physical Planning and Works
 Department of Urban Development and Building Construction
 Earthquake Risk Reduction and Recovery Preparedness Programme for Nepal
 (UNDP/ERRRP-Project: NEP/07/010)